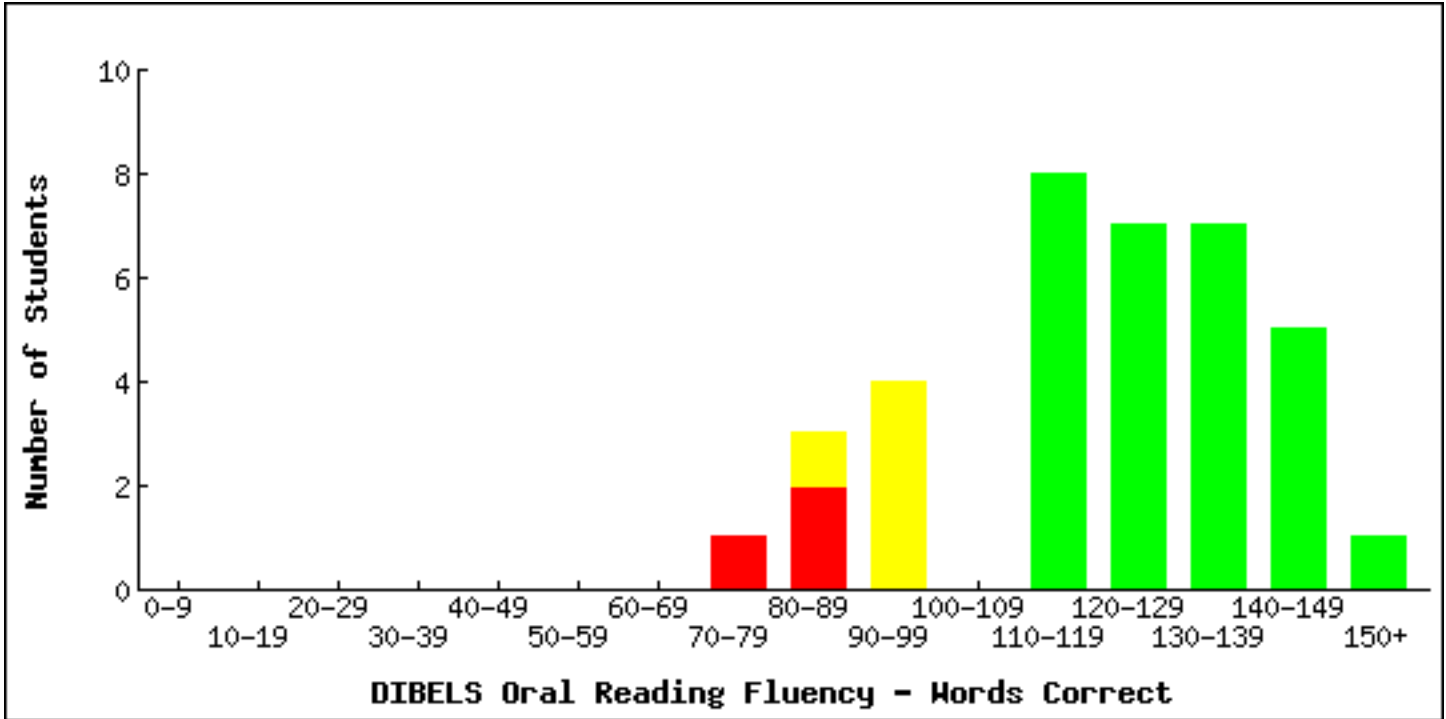


Histogram Report - DIBELS Next

F kwtlev< Gzco r rg'F kwtlev
 Uej qqn< Cmi'Uej qqnu
 I tcf g< Ugeqpf 'I tcf g
 [gct< 4234/4235
 Rgtkqf < Gpf
 O gcuwtg< F IDGNU'Qtcn'Tgcf lpi 'Hwgepe{ '/'Y qtf u'Eqttegeve
 P ggf 'hqt'Uwr r qt< Tgeqo o gpf gf 'I qcu



Likely to Need Intensive Support
 8% *p?5+

Likely to Need Strategic Support
 14% *p?7+

Likely to Need Core Support
 78% *p?4: +

- Ueqtg'tcpi g<80-83
- Well Below Benchmark

- Ueqtg'tcpi g<84-110
- Below Benchmark

- Ueqtg'tcpi g<111-275
- At or Above Benchmark

Split Bars
 Ur rnk'dctu'ctg'wugf 'y j gp'yj g'ewqhh'ueqtgu'qeewt'lp'yj g'o kf f ng'qh'c'ueqtg'tcpi g'Vj g'pwo dgt'qh'uwwf g'pwi'ku'lpf kcvgf 'd{ 'yj g'uk' g'qh'yj g'r ctv0

Hqt'o qtg'kphqto cwkqp"qp"ceewtce{ 'cpf 'hwgepe{ .ugg<
Big Ideas in Beginning Reading: Accuracy and Fluency
 j wru<lf kdgnu0wtgi qp0gf wltcklpi kkt keewtce{/cpf/hwgepe{0j r

Participation Summary - DIBELS Next

F kntlev< Gzco r rg'F kntlev
 Ueqr g< F kntlev'y kf g
 I tcf g< Ugeqpf 'I tcf g
 [gct< 4234/4235



School	Class	Class Enrollment	Moved Out	Number of Students Tested				Month
				DORF-Words Correct	DORF-Errors	DORF-Retell	DORF-Retell Quality	
Gzco r rg'Uej qqil3	4pf Qzco r rgC	3:	2	3:	3:	3:	3:	Oc{
Gzco r rg'Uej qqil3	4pf Qzco r rgD	3:	2	3:	3:	3:	3:	Oc{
Total:		36	0	36	36	36	36	

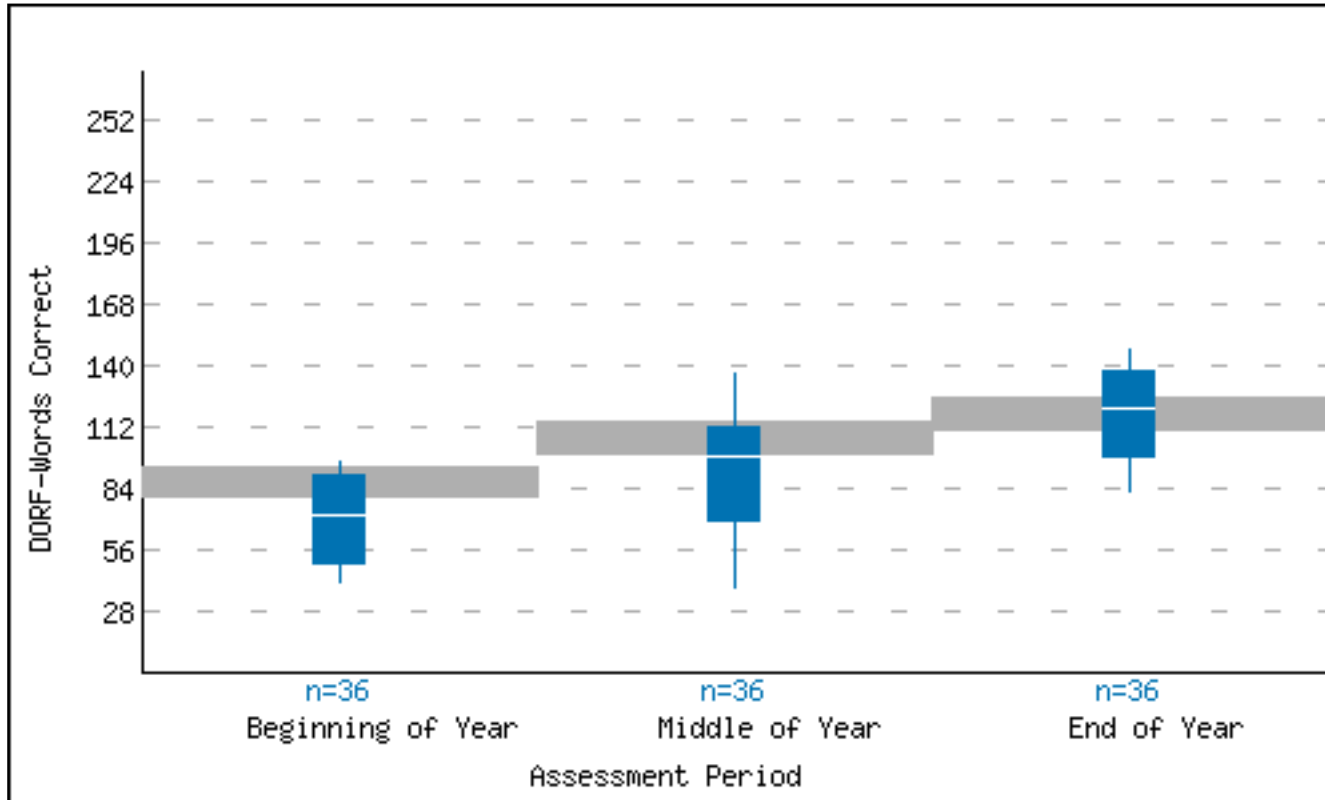
Students not making benchmark? Visit [Dki 'K gcu'lp'Dgi kppkpi 'T gcf kpi 'q'rgctp'o qtg'cdqw'gcej 'rkgctce{ 'unkm'cuuguugf 'd{ 'F HDGNUO](#)

Í 'Wpkxgtukv{ 'qh'Qtgi qp'Egpgvt'qp'Vgcej kpi 'cpf 'Ngctpkpi 0Cm'tki j w't'gugtxgf 0

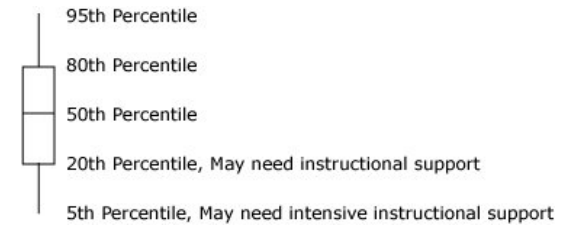
: 194234.'3

Yearly Box Plot Report - DIBELS Next

District: Example District
 School: All Schools
 Grade: Second Grade
 Year: 2012-2013
 Measure: DIBELS Oral Reading Fluency - Words Correct
 Need For Support: Recommended Goals



	Beginning	Middle	End
2012	n=36	n=36	n=36
95th %tile Score	96	136	147
80th %tile Score	90	112	137
50th %tile Score	71	99	121
20th %tile Score	50	69	99
5th %tile Score	41	38	82



Benchmark Goals

Benchmark Goal for DORF-Words Correct is 80 at the Beginning of Second Grade
Benchmark Goal for DORF-Words Correct is 100 at the Middle of Second Grade
Benchmark Goal for DORF-Words Correct is 111 at the End of Second Grade

Students not making benchmark? Visit [Big Ideas in Beginning Reading](#) to learn more about each literacy skill assessed by DIBELS.