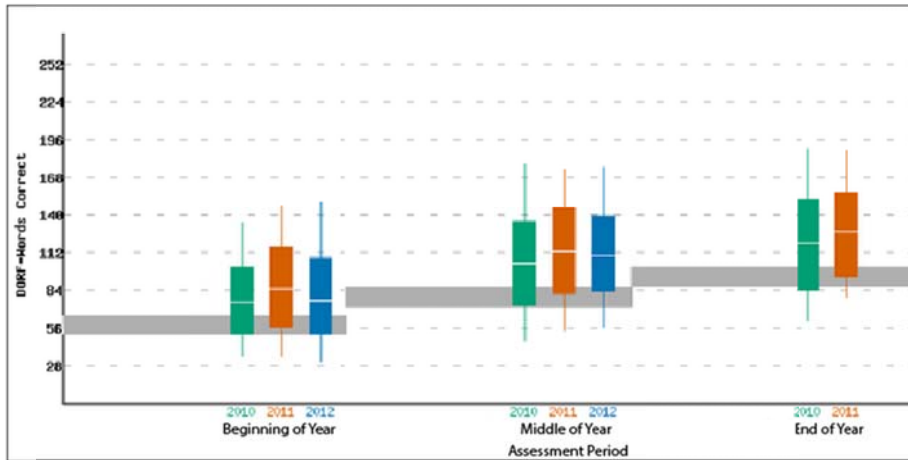


District: Example District  
 School: Example School  
 Assessment: DIBELS Next  
 Need for Support: Former Goals  
 Measure: DORF- words correct

Cross Year Box Plot  
 DIBELS Oral Reading Fluency- Words Correct



**Benchmark Goals**

- Benchmark Goal for DORF-Words Correct is 52 at the Beginning of Second Grade
- Benchmark Goal for DORF-Words Correct is 72 at the Middle of Second Grade
- Benchmark Goal for DORF-Words Correct is 87 at the End of Second Grade

**Box Plot Legend**

	Beginning	Middle	End		Beginning	Middle	End		Beginning	Middle	End
<b>2012</b>	n=105	n=102	n=0	<b>2011</b>	n=104	n=101	n=103	<b>2010</b>	n=97	n=98	n=96
95th %tile Score	149	178	0	95th %tile Score	147	174	188	95th %tile Score	134	178	189
80th %tile Score	108	139	0	80th %tile Score	118	145	157	80th %tile Score	101	135	152
50th %tile Score	77	110	0	50th %tile Score	85	113	127	50th %tile Score	76	104	119
20th %tile Score	52	83	0	20th %tile Score	57	82	94	20th %tile Score	52	73	84
5th %tile Score	32	57	0	5th %tile Score	38	55	79	5th %tile Score	38	47	62

- ▬ 95th Percentile
- ▬ 80th Percentile
- ▬ 50th Percentile
- ▬ 20th Percentile, May need instructional support
- ▬ 5th Percentile, May need instructional support