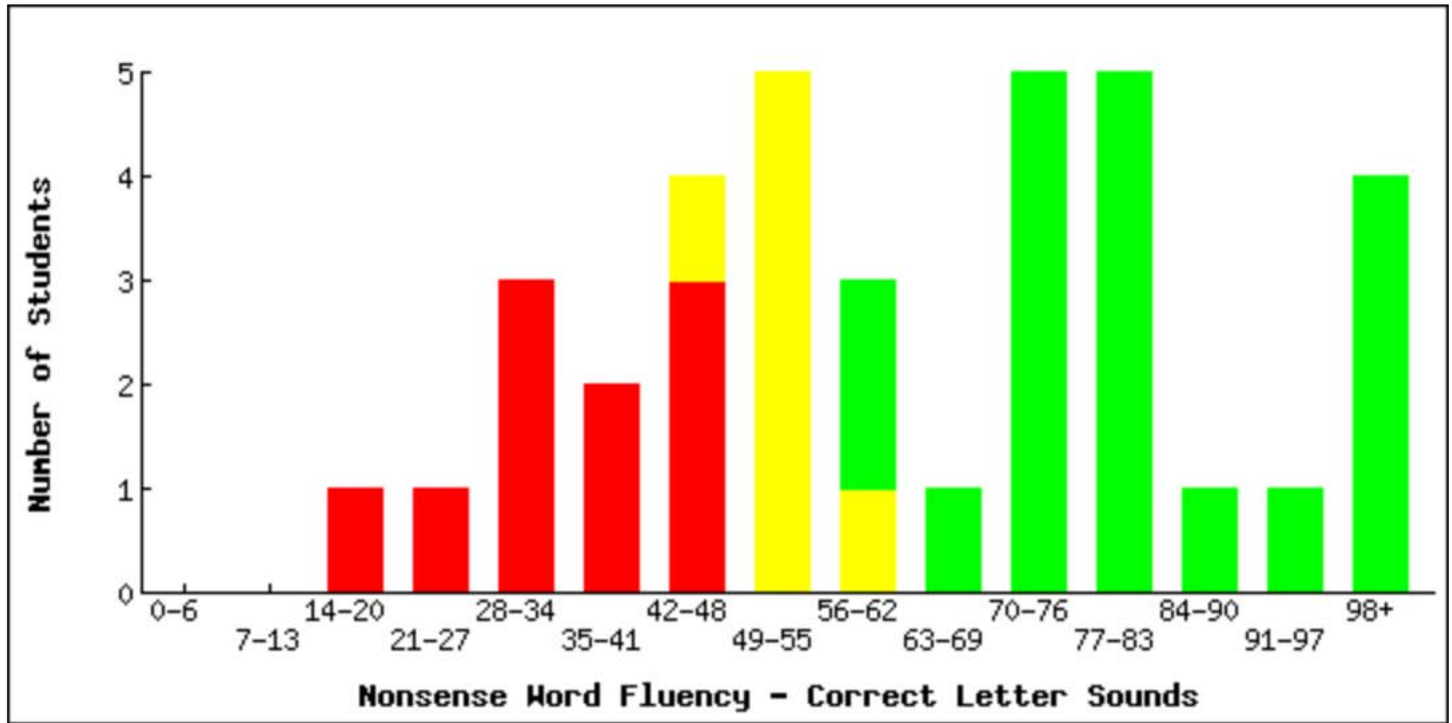


### Histogram Report - DIBELS Next

District: Example District  
 School: All Schools  
 Grade: First Grade  
 Year: 2012-2013  
 Period: End  
 Measure: Nonsense Word Fluency - Correct Letter Sounds  
 Need for Support: Former Goals



**Likely to Need Intensive Support**  
 28% (n=10)

**Likely to Need Strategic Support**  
 19% (n=7)

**Likely to Need Core Support**  
 53% (n=19)

• Score range: 0-46  
 • Well Below Benchmark

• Score range: 47-57  
 • Below Benchmark

• Score range: 58-143  
 • At or Above Benchmark

**Split Bars**  
 Split bars are used when the cutoff scores occur in the middle of a score range. The number of students is indicated by the size of the part.

For more information on alphabetic principle, see:  
**Big Ideas in Beginning Reading: Alphabetic Principle**  
<https://dibels.uoregon.edu/training/bir/alphabetic-principle.php>