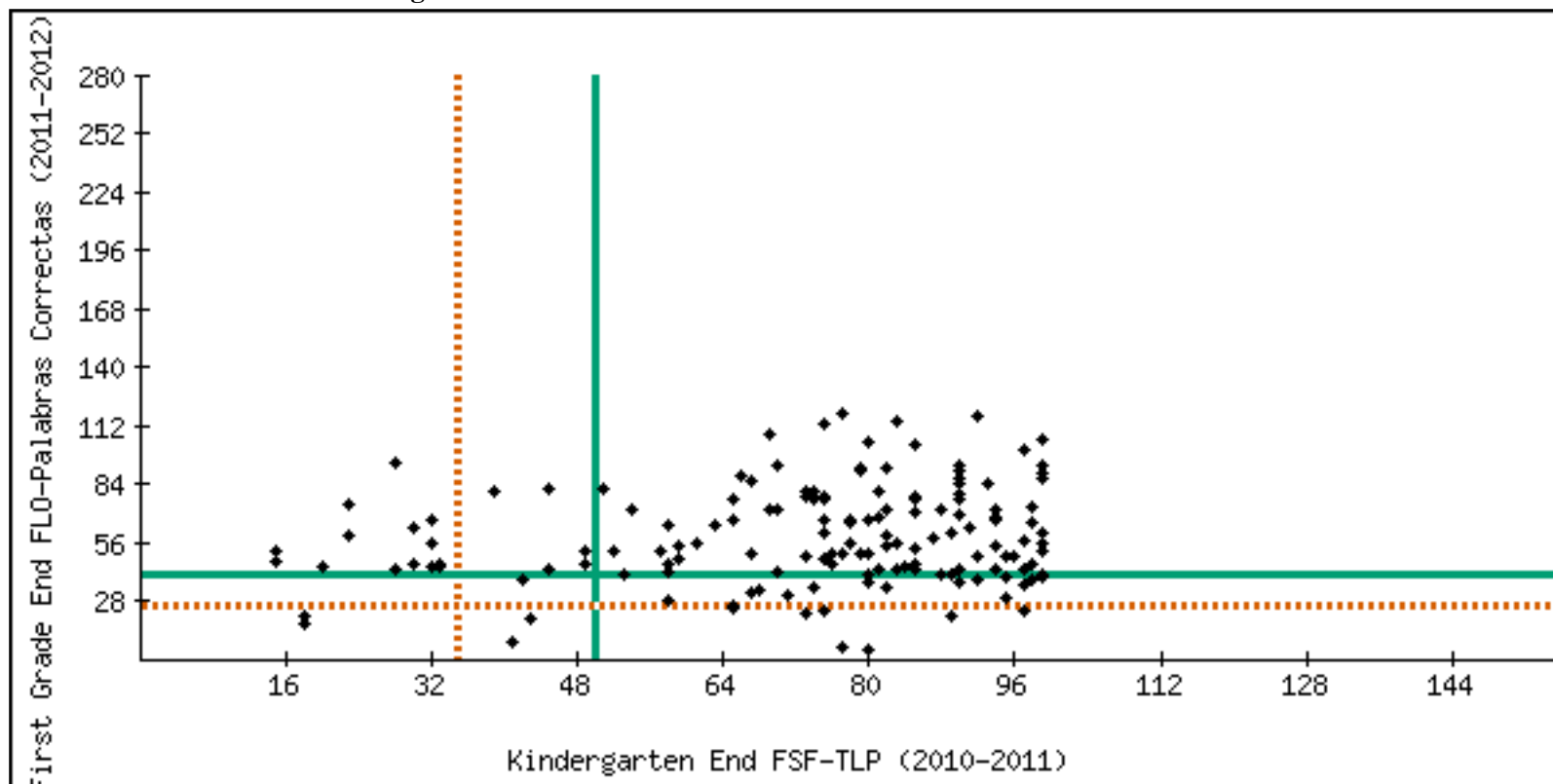


## Scatter Plot Report - IDEL 7th Edition

District: Example School District (Spanish)  
 School: All Schools  
 Grade: First Grade  
 Year: 2011-2012

Kindergarten End FSF-TLP - to - First Grade End FLO-Palabras Correctas



**Legend**  
 — Benchmark Goal  
 - - - - - Cut Point Score

Odds of being Low Risk in FLO-Palabras Correctas in End of First Grade when Deficit in FSF-TLP in End of Kindergarten are 14 out of 16, or 88%

Odds of being Low Risk in FLO-Palabras Correctas in End of First Grade when Established in FSF-TLP in End of Kindergarten are 107 out of 131, or 82%

**Students not making benchmark? Visit [Big Ideas in Beginning Reading](#) to learn more about each literacy skill assessed by DIBELS.**